

PRECISION BUILT SNAP ACTING ENCLOSURES (fitted to SIRCO 2000 Series Switches)

SINGLE SWITCH ENCLOSURE:



Compliant to: **(CE)** EN IEC 60079-0:2018
 EN 60079-1:2014
 ⓧ II 2 G Ex db IIB + H₂ T6 Gb (Tamb -20°C to +60°C)
 Directive: 2014/324/EU
 Certificate Number: Baseefa02ATEX0025X – Issue 4
 Certifying Authority: **SGS Fimko Oy**

(UKCA) EN IEC 60079-0: 2018
 EN 60079-1: 2014
 ⓧ II 2 G Ex db IIB + H₂ T6 Gb (Tamb -20°C to +60°C)
 UKSI:1107 (as amended) – Schedule 3A, Part 1
 Certificate Number: BAS22UKEX0245X
 Certifying Authority: **SGS Baseefa Limited**

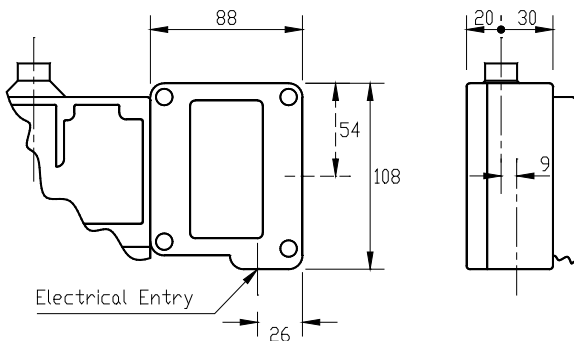


Flanged 2004 Pressure Switch with Single Switch Enclosure

Description of Equipment or Protective System

The Type H Series Microswitch Unit comprises a flat flanged housing and cover manufactured from aluminium alloy, cast iron or a thinner walled enclosure from stainless steel. The cover is attached using 4 screws of grade A2-70 stainless steel. The housing has provision for a threaded bushing with an operating shaft and up to two cable entries. Various specified microswitches can be fitted with various ratings to produce Type References as indicated below.

Type Reference	Rating
H(BZ-2R)	15A Res. 125, 250, 480 Vac 0.125 HP 125 125 Vac, 1/4 HP 250 Vac 0.25A 250 Vdc, 1/2A 125 Vdc
H(BZ-R)	15A Res. 125, 250, 480 Vac 0.125 HP 125 125 Vac, 0.25 HP 250 Vac
H(BZ-2R-722331)	1A Res. 125 Vac 1A Res. 24 Vdc 0.5A Ind. 24 Vdc
H(MT-4R)	10A Res. 125 Vac, 125 Vdc 0.25 HP. 125 Vac, 125 Vdc (non polarised)
H(91SE1)	5A Res. 3A Ind. 28 Vdc 5A Res. 5A Ind. 125 Vac, 250 Vac 50Hz
H(91SE1-3N55)	1A Res. 0.25A Ind. 30 Vdc
H(BM-2R)	15A Res. 125, 250, 480 Vac 2A Res. 30 Vdc, 0.4A Res. 125 Vdc 0.2A Res. 230 Vdc
H(BM-1R)	15A Res. 125, 250, 480 Vac



Internal and external earth facilities are provided.

Cable entry holes are provided as specified on the certified drawings for the accommodation of suitable ATEX certified flameproof cable entry devices, with or without the interposition of a suitable ATEX certified flameproof thread adaptor. Unused entries are to be fitted with suitable ATEX certified flameproof stopping plugs.

Suitable flameproof cable entry devices, thread adaptors and stopping plugs certified as Equipment (not a Component) under an EU type Examination Certificate to Directive 2014/34/EU may be used in the manner specified above.

TWIN OR TWO SWITCH ENCLOSURE:

Compliant to:

- (CE)** EN IEC 60079-0:2018
 EN 60079-1:2014
 Ⓜ II 2 G Ex db IIB + H2 T6 Gb (Tamb -20°C to +60°C
 Directive: 2014/324/EU
 Certificate Number: Baseefa02ATEX0026X – Issue 3
 Certifying Authority: **SGS Fimko Oy**

- (UKCA)** EN IEC 60079-0:2018
 EN 60079-1:2014
 Ⓜ II 2 G Ex db IIB + H2 T6 Gb (Tamb -20°C to +60°C)
 UKSI:1107 (as amended) – Schedule 3A, Part 1
 Certificate Number: BAS22UKEX0246X
 Certifying Authority: **SGS Baseefa Limited**



HPN2001 Pressure Switch with Twin/Two Switch Enclosure

Description of Equipment or Protective System

The Type H2 Series Microswitch Unit comprises a flat flanged housing and cover manufactured from aluminium alloy or cast iron. The cover is attached using 4 screws of grade A2-70 stainless steel. The housing has provision for a threaded bushing with an operating shaft and up to two cable entries. The internal arrangement comprises a terminal block and up to two specified microswitches, or one microswitch and two end line resistors. Various specified microswitches can be fitted with various ratings to produce Type References as indicated below.

H2(BZ-2R)	15A Res. 125, 250, 400 Vac 0.125 HP 125 125 Vac, 1/4 HP 250 Vac 0.25A 250 Vdc, 1/2A 125 Vdc
H2(BZ-R)	15A Res. 125, 250, 400 Vac 0.125 HP 125 125 Vac, 0.25 HP 250 Vac
H2(BZ-2R-722331)	1A Res. 125 Vac 1A Res. 24 Vdc 0.5A Ind. 24 Vdc
H2(BM-2R)	15A Res. 125, 250, 400 Vac 2A Res. 30 Vdc, 0.4A Res. 125 Vdc 0.2A Res. 230 Vdc
H2(BM-1R)	15A Res. 125, 250, 400 Vac

Internal and external earth facilities are provided.

Cable entry holes are provided as specified on the certified drawings for the accommodation of suitable ATEX certified flameproof cable entry devices, with or without the interposition of a suitable ATEX certified flameproof thread adaptor. Unused entries are to be fitted with suitable ATEX certified flameproof stopping plugs.

Suitable flameproof cable entry devices, thread adaptors and stopping plugs certified as Equipment (not a Component) under an an EU type Examination Certificate to Directive 2014/34/EU may be used in the manner specified above.

