

MODELS:

2003X	Single Switch,	Differential Non-Adjustable
203X	Single Switch,	Differential Adjustable
2013X	Two Switch,	Differential Non-Adjustable
213X	Two Switch,	Differential Adjustable on 1 st Switch Only

These Pressure Switches are operated by a Capsule Unit consisting of a Piston and Buna N 'O' Ring in the pressure range between 14 to 420 Barg.

Controls can be supplied with varying degrees of protection, and with various approvals for use in Explosion-proof/Flameproof areas. (Refer to list for options). More detailed information on these approvals can be found in the relevant sections of this catalogue.

Materials used in the manufacture of sensing units are according to customer requirements and operational application.

All switches are fitted with a mounting bracket as Standard.

All switches are available with internal or external set point adjustment (External Adjustment is Standard).

For accuracy class and zone refer to leaflet 03/09.

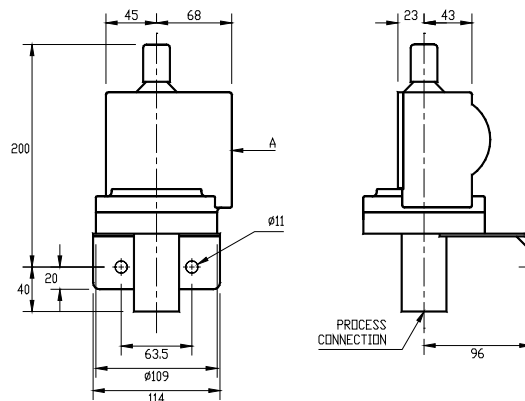


PRESSURE OPERATED CONTROLS

OPERATING RANGE	DIFFERENTIAL NON-ADJUSTABLE	BASIC MODEL CODE RANGE SERIES CODE CODE	PROOF PRESSURE	MAX WORKING PRESSURE	
14 to 105 Barg	4 or 6 Barg at Range Max*	8 – 2003XW – SO	140 Barg	126 Barg	Higher Proof Pressures
70 to 210 Barg	6 or 10 Barg at Range Max*	9 – 2003XW – SO	280 Barg	252 Barg	Available. Consult Factory.
140 to 420 Barg	15 or 25 Barg at Range Max*	10 – 2003XW – SO	560 Barg	504 Barg	
*Please state preference					
DIFFERENTIAL ADJUSTABLE					
14 to 105 Barg	6 to 25 Barg	8 – 203XW – SO	140 Barg	126 Barg	Higher Proof Pressures
70 to 210 Barg	10 to 50 Barg	9 – 203XW – SO	280 Barg	252 Barg	Available. Consult Factory.
140 to 420 Barg	25 to 100 Barg	10 – 203XW – SO	560 Barg	504 Barg	

Standard switches contain one single pole double throw microswitch.
 Standard electrical rating 15 amps 400 vac.
 Standard electrical entry M20 x 1.5 Int. through 360°.
 Standard construction Stainless Steel Pressure Capsule and Buna N 'O' Ring (M.W.T. 90° C)

For construction other than above refer to the 2nd page of this leaflet for options and change code accordingly.



Terminal box, explosion-proof/flameproof enclosure, pneumatic valve fitted to surface 'A'

DEGREE OF PROTECTION	WEATHERPROOF	CODE	W
	IP55 IP66	IP55 IP66	
ELECTRICAL OUTPUTS (CE) (FOR HAZARDOUS AREAS)	ATEX approved for Zone 2 areas EN IEC 60079-0:2018, EN IEC 60079-15:2019, EN IEC 60079-7:2015 + A1:2018 ⊕ II 3G Ex ec nC IIC T6 Gc (T _{amb} = -20°C to +60°C) Certificate Number: Baseefa03ATEX0319X Issue 4 Certifying Authority: SGS Fimko Oy	E(d)	All ranges will have 2 x the larger of the two Non-Adjustable Differentials listed.
(UKCA)	EN IEC 60079-0:2018, EN IEC 60079-15:2019, EN IEC 60079-7:2015 + A1:2018 ⊕ II 3G Ex ec nC IIC T6 Gc (T _{amb} = -20°C to +60°C) Certificate Number: BAS22UKEX0248X Certifying Authority: SGS Baseefa Limited		
(CE)	ATEX approved for Zone 1 areas EN IEC 60079-0:2018, EN 60079-1:2014 ⊕ II 2 G Ex db IIB + H ₂ T6 Gb (T _{amb} -20°C to +60°C) Certificate Number: Baseefa02ATEX0025X Issue 4 (single switch) *1 Certificate Number: Baseefa02ATEX0026X Issue 3 (twin/two switch) *1 Certifying Authority: SGS Fimko Oy	H(A – K)	*1/*2 H(A) = BZ-2R *1/*2 H(B) = BZ-R *1/*2 H(C) = BZ-2R-722 *1 H(D) = 91-SE1 *1 H(F) = 91-SE1-3N55 *1 H(I) = MT-4R *1/*2 H(J) = BM-2R *1/*2 H(K) = BM-1R
(UKCA)	EN IEC 60079-0:2018, EN 60079-1:2014 ⊕ II 2 G Ex db IIB + H ₂ T6 Gb (T _{amb} -20°C to +60°C) Certificate Number: BAS22UKEX0245X (single switch) *2 Certificate Number: BAS22UKEX0246X (twin/two switch) *2 Certifying Authority: SGS Baseefa Limited		Differentials Listed over and Electrical Ratings will vary depending on Microswitch Fitted. See Leaflet 22/02 for Details
	Intrinsic Safety. Gold Contact Microswitch classed as 'Simple Electrical Apparatus' and may be used without certification in a barrier circuit. (BS EN 60079-11: 2012, BS EN 60079-14: 2014 Para 3.5.5)	WIS	All ranges will have 1.5 x the larger of the two Non-Adjustable Differentials listed.
S.P.D.T. ALTERNATIVES	HIGH LOAD	10 amp, 125 vac/vdc	Prefix Range Code with 'X' and state ratings.
TWO SWITCH MODELS (ELECTRICAL OUTPUT)	Max. Setting Span = 30% of the Range Span Adjustable Differential is not available on second switch.	2013X 213X	E(d), H(D), H(F), H(I) Not available as Two Switch Model
TWIN SWITCH MODELS (ELECTRICAL OUTPUT)	Twin Microswitches for simultaneous action	TW	Differential x 2
PNEUMATIC VALVE SWITCHES	Poppet 3 port Pilot Operated 3 port	SMS PV	All ranges will have 2 x the larger of the two Non-Adjustable Differentials listed. Differential will be 5 x the larger listed.
PRESSURE CHAMBER MATERIAL	Stainless Steel	S	
TRANSFER SEAL DIAPHRAGM	Stainless Steel	2003/2X, 203/2X 2013/2X, 213/2X	
PROCESS CONNECTIONS	1/4" B.S.P. Female standard	Alternatives available up to 1/2"	
MANUAL RESET (RISING or FALLING)	Available on all Electrical & Pneumatic 2003X/203X Series, except Explosion-proof/Flameproof Models.	MRR (Reset on Rising Pressure) MRF (Reset on Falling Pressure)	