

## THE PNEUMATIC SWITCH

The design combines two separate units into a single control.

The sensing unit is the well tried, job proven SIRCO™ Control, replacing the electric switching element with a Pneumatic Output.

Main application areas:

- Hazardous (being absolutely explosion proof).
- Direct actuation of valve motors (without the use of solenoids or pilot valves).
- Control system simplification (with consequent decrease in original and maintenance costs).

The valves furnish a positive pneumatic on / off signal.

### NOTE:

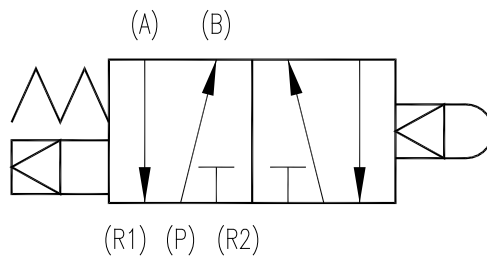
Controls fitted with PV Pneumatic Valves, can only be supplied with a Fixed Differential.

Differentials are 5 x the larger of the two offered on a particular range, or 10 x when only one differential is offered.



PV Pneumatic Valve fitted to 2001W Pressure Switch

The valve described above can be supplied fitted to any model of the series 2000 pressure, vacuum and temperature controls.



**CONNECTION DETAILS:**

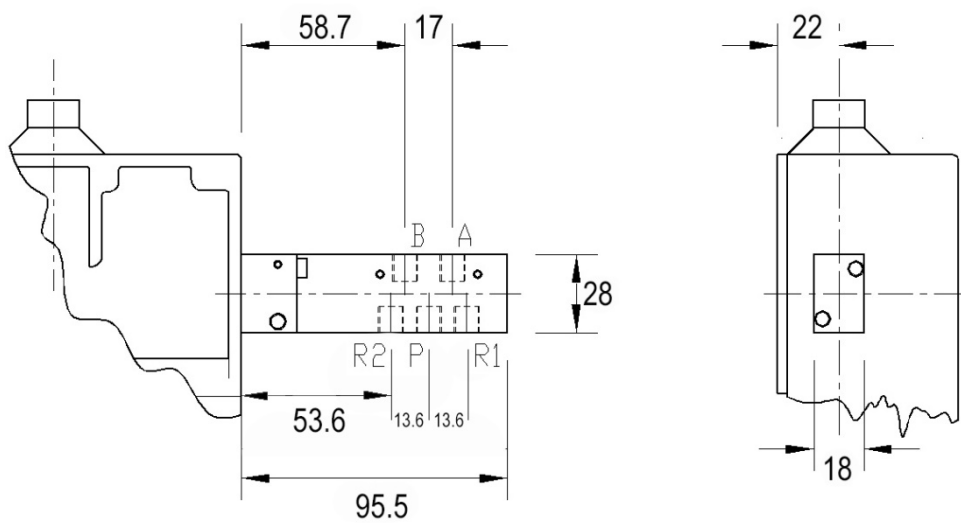
Air must be fed into port 'P' at all times as this also feeds the Internal Pilot.

When the Valve is in the 'un-operated' position air will flow from port 'B'.  
Port 'A' will be vented through port 'R1'.

When the Valve is operated air will flow from port 'A' and port 'B' will be vented through port 'R2'.

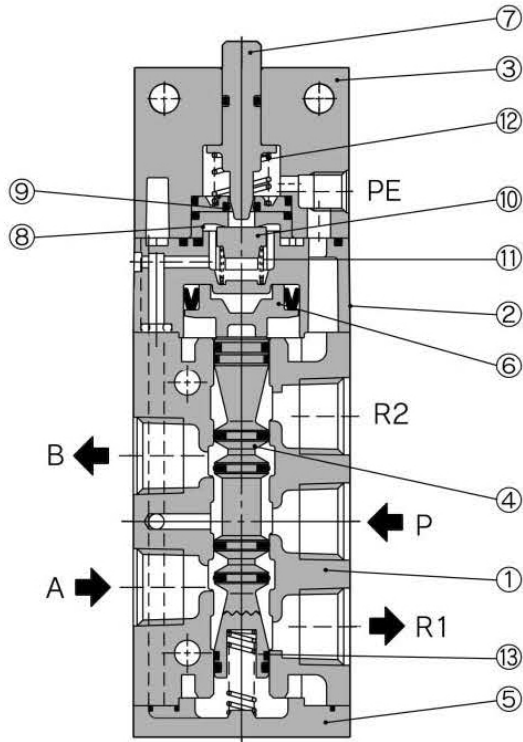
**Notes:**

- a) A pilot air supply of between 1.5 to 7 Bar must be connected to port 'P'.  
Whatever pressure is put in as a pilot, this will also be the switching pressure.
- b) Main Port connections are 5 x 1/8" BSP (standard)
- c) Pilot Exhaust connection is M5 x 0.8

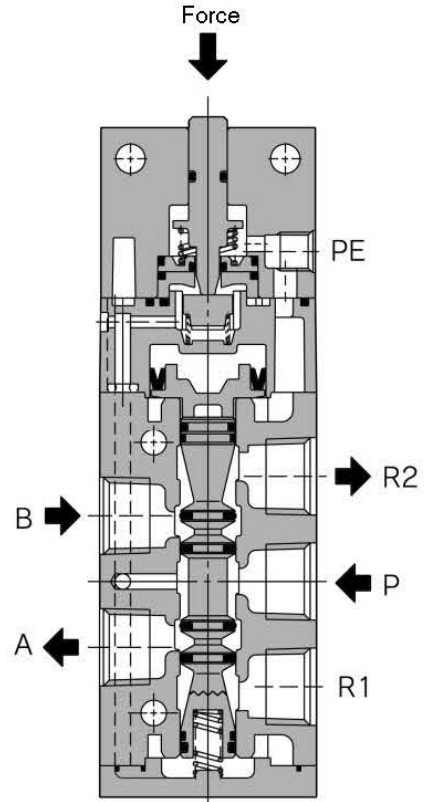


**CONSTRUCTION:**

**Non-actuated**



**Actuated**



	<b>Description</b>	<b>Material</b>	<b>Note</b>
①	Body	A383 Aluminium	Metallic Plated
②	Pilot Body	Polybutyleneterephthalate	
③	Head Cover	Zinc Alloy	Black Zinc Chromated
④	Spool Valve Assembly		
⑤	End Cover	Zinc Alloy	Metallic Plated
⑥	Piston	Polyoxymethylene	
⑦	Plunger	Polyoxymethylene	
⑧	Valve Seat (A)	Polyoxymethylene	
⑨	Valve Seat (B)	Polyoxymethylene	
⑩	Valve Assembly	Nitrile Rubber	
⑪	Valve Spring	Stainless Steel	
⑫	Return Spring	Stainless Steel	
⑬	Spool Spring	Stainless Steel	