



**SWEYNES INDUSTRIAL ESTATE
ASHINGDON ROAD
ROCHFORD
ESSEX, SS4 1RQ**

Tel: + 44 (0)1702 545125
Email: info@sirco-controls.co.uk
Website: www.sirco-controls.co.uk

UK Company Registration No: 672489

LEAFLET No. INS 5 – ATEX E(d)

Issue 8 - 10/07/2023

This leaflet applies to Controls approved by SGS UK Limited and SGS Fimko Oy for Equipment or Protective Systems intended for use in Potentially Explosive Atmospheres.

Directive 2014/34/EU
UKSI 2016:1107 (as amended)





EN IEC 60079-0:2018
EN IEC 60079-15:2019
EN IEC 60079-7:2015+A1:2018

NOTES:

Please read in conjunction with leaflet No. INS 1 for Pressure Switches and INS4 for Temperature Switches.

The purchaser should make the manufacturer aware of any external effects or aggressive substances that the equipment maybe exposed to.

SWITCH IDENTIFICATION LABEL

 CONTROLS LTD. ROCHFORD, ESSEX, SS4 1RQ	
TYPE	[REDACTED]
SERIAL No.	[REDACTED]
RANGE	[REDACTED]
M.W.P.	[REDACTED] P.P. [REDACTED]
DIFF. FIXED	[REDACTED]
DIFF. ADJ.	[REDACTED] TO [REDACTED]
[REDACTED]	
Y.O.M.	[REDACTED] 250Vac 5A INDUCTIVE 30Vdc 3A INDUCTIVE 30Vdc 5A RESISTIVE
 0598	 1180
Baseefa03ATEX0319X	BAS22UKEX0248X
 II 3 G	
Ex ec nC IIC T6 Gc Ta -20°C to +60°C	

IMPORTANT NOTICE
SPECIAL CONDITIONS FOR SAFE USAGE

- a) The ratings which appear on the nameplate must not be exceeded.
- b) For Pressure Switches the diaphragm material must be compatible with the process gas or liquid.
- c) For Temperature Switches the T6 temperature classification is based on the switch unit temperature only. The sensing bulb temperature will be the same as the maximum range of the process liquid or gas.

SGS UK Limited and SGS Fimko Oy

APPROVED SWITCHES

SERIES ATEX 2000E(d)

Sirco Switches are manufactured under a very strict quality control and are machined, assembled and tested under strict supervision before a certificate is issued.

ELECTRICAL CONNECTIONS ON APPROVED CONTROLS

When wiring the Switch ensure that the correct type and size of cable for the required current rating is used.

The fitted microswitches are of the Single Pole Double throw (S.P.D.T.) type and can be connected to switch either 'on' or 'off' on pressure or temperature rise (see the diagrams in the centre of this manual).

The terminal box cover of the approved switch must first be removed (with a slotted screwdriver). Fit a suitable cable gland to the Switch, making sure that the thread type on the gland matches that of the switch. The thread type is stamped on the housing adjacent to the cable entry, M20 x 1.5 being standard. Pass the cable through the gland and connect to the microswitch via the terminal block.

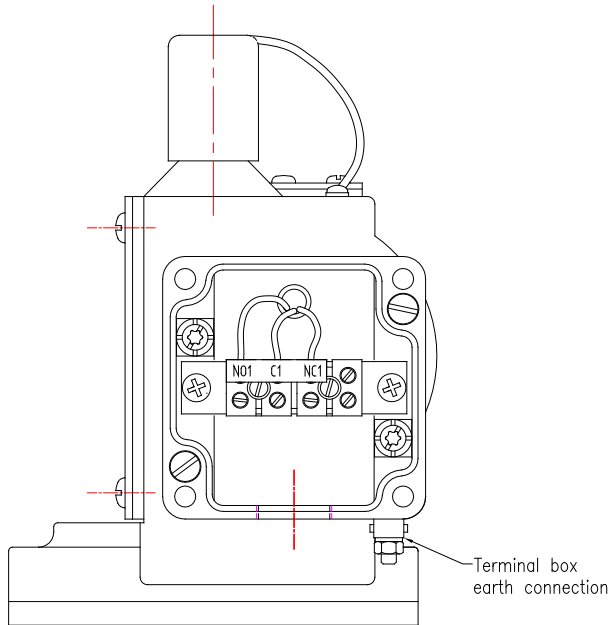
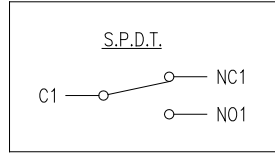
The Switch must be earthed by the connection of a suitable earthed wire to the earth terminal inside or outside the terminal box and/or the terminal on the rear of the Switch. It is not sufficient to use only the process connection as an earth.

NOTE: Due care must be taken not to overtighten the terminals or disturb the position of the microswitch in the housing.

REPLACING THE MICROSWITCH

It rarely becomes necessary to replace the S.P.D.T. microswitches within the housing, but should the occasion arise, it should be done by a qualified engineer and the switch re-zeroed.

STANDARD CONNECTION DETAILS SINGLE SWITCH



STANDARD CONNECTION DETAILS TWIN OR TWO SWITCH

